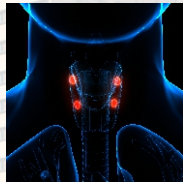




Thyroid Swelling



Parathyroids



Emergency	+91 84980 81000
Appointments / General Information	+91 40 6700 0000
Health Check Department	+91 84980 83000
Radiology Services	+91 84980 73000
Centralised Report Dispatch Unit 9:00 AM - 6:00 PM	+91 84980 76000
Pharmacy	+91 40 6700 0444

☎ 040 67 000 000 📞 040 67 000 111

Plot No. 3 • Road No. 2 • IT & Financial District • Gachibowli • Hyderabad - 500 035

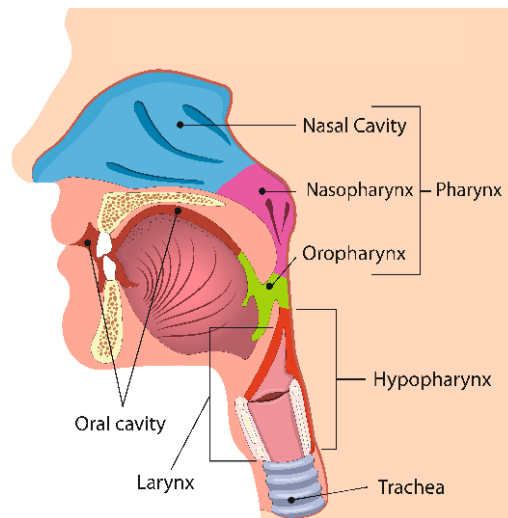
Visit us
continentalhospitals.com
info@continentalhospitals.com

Follow us on: [in](#) [f](#) [t](#) [v](#) [p](#)
linktr.ee/continentalhospitals

CANCER PREVENTION STAY AHEAD OF CANCER

**EARLY DETECTION
BETTER OUTCOMES**

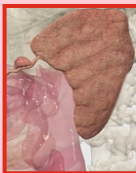
HEAD & NECK



**DEPARTMENT OF
CANCER PREVENTION AND
EARLY CANCER DETECTION**

SCOPE OF SERVICES (To manage cancers)

- Cancer arising from skin over the head and neck
- Lips
- Cheeks (INSIDE)
- Tongue
- Roof of Mouth (Palate)
- Jaw Bones
- Sinuses
- Floor of Mouth
- Nasal Cavity
- Tonsils
- Back of the throat
- Voice box (Larynx)
- Thyroid
- Parathyroid
- Lymph nodes the neck



SALIVARY GLANDS

- In India, cancer of the Mouth, accounts for 30% of all cancers
- Common causes in India-smoking, regular content, excessive consumption of alcohol, high in spirits poor oral hygiene, excessive spicy food, HPV viral infection, HIV infection, EBV VIRUS INDUCED CANCER(Nasopharynx)
- Chewing betel leaf with arecanut, white lime, tobacco, smoking bedi, vaping
- Potentially Malignant lesions in the mouth eg a white patch which cannot be rubbed off, a white patch mixed with red patch,

Symptoms

- Non healing ulcer in the mouth.
- Inability to open the mouth due to no trauma, inside of the cheeks very hard
- A non-healing ulcer, giving rise to pain and swelling, with a Lump in the neck
- Swelling arising from the jaws, with loose teeth, May have grown rapidly
- Bleeding from the mouth
- Persisting painful lump in the neck
- Unable to eat and drink due to painful ulcer on the tongue
- Persistent pain in the throat
- Change of voice, difficulty in Swallowing
- Persistent Bleeding from the nose intermittently.

- Non healing ulcer in the skin covering the head and neck, increasing in size, bleeding from the surface, may be associated with a lump in the neck
- Loss of weight See your doctor or dentist, without delay if your symptoms persist- A good rule, not longer than one month. Do Not Delay.
- **Early Diagnosis and treatment gives you increased chance of survival**
- Your health care provider will refer you to a specialist with an interest in Head and Neck Cancer
- You may require a tissue to be removed to confirm diagnosis.
- You may require various blood tests, ULTRASOUND CT Scans, MRI, PET Scans
- You may require special genetic laboratory studies
- With all the available results, The multi disciplinary team would work out a treatment, individually planned for you At Continental Cancer Centre, We do not provide "One size to fit all" We personalize the care for each patient with all the data we have gathered. We then provide in full, all the information to the patients, the diagnosis, treatment options and come to the best possible conclusion. Treatment in general consists of surgery, Radiotherapy with or without chemotherapy. We have a mature team of clinicians, clinical oncologists, visiting geneticists, immunotherapy experts and surgeons with fine capability to remove the tumours if possible as a first choice. We also have an active surveillance team to follow these patients after completing treatment and patients would then into our survivorship programme. We also have an excellent team of reconstructive surgeons
- In situations, where the cancer had recurred, we discuss options available and present them to the patient and immediate relatives.
- **Our continental Cancer Team is ready to serve you.**

**DO NOT DELAY CONSULTING YOUR DOCTOR
IF YOU HAVE THE SYMPTOMS/CONCERNS**